

Mimosa™ NearPoint PST Archiving Option

Archiving

Storage Management

Recovery



Automated Management of Microsoft® Outlook PST Files

Microsoft® Office Outlook Personal Store (PST) files create perhaps the most difficult challenges for an Exchange administrator. Users routinely offload email messages and attachments from Exchange Server to local PST files to stay below mailbox quota limits; however, storing valuable company intellectual property in files that are distributed widely across employee desktops—or laptops—causes many problems. First, very few companies have implemented a data protection strategy down to the desktop level, so storing email in PST files exposes a huge amount of company intellectual property to data loss resulting from hardware failure and lost—or stolen—laptops. Second, managing email contained in PST files for compliance and legal discovery is also very costly, because of the widespread distribution of PST files. The PST dilemma is how to manage these files in a manner that supports an organization's need for retention and disposition, legal discovery, and compliance while keeping it accessible to end users.

NearPoint PST Archiving Option

The Mimosa™ NearPoint™ PST Archiving Option archives PST files into the NearPoint™ archive. With the PST Archiving Option, PST files are automatically located across many servers and laptops, characterized to a given user account, and actively imported (or ingested) into the NearPoint archive. Using easy-to-use wizard-driven menus, administrators manage all aspects of PST archiving using a dedicated PST Archiving Option management console (Figure 1). And for end users who want to retain personal control over their PST files, a manual PST archiving method is available that operates within Outlook. Once PST files are loaded into the NearPoint archive, the PST data can be viewed by its original folder hierarchy and searched by auditors to support legal discovery. By using the PST Archiving Option, administrators can eliminate the need for PST files altogether.

Key Benefits

- Allows you to centrally manage all PST data in an indexed email archive
- Enables full-text search of all PST data, including attachments, for legal discovery
- Offers Self-Service Access™ for legal discovery and individual search and retrieval
- Applies company email retention and disposition policies consistently for compliance
- Eliminates the need for PST files and reduces storage demand on desktops and file servers

Automated PST Archiving

The NearPoint PST Archiving Option seamlessly integrates with NearPoint and provides total management of the PST archival process. The PST archive policies are created with the help of an intuitive wizard that walks the administrator through the entire process step by step. The administrator first loads the target machine list from a Microsoft Excel file. After the machine list is loaded, a second wizard creates the PST archive policy. The PST archive policy can be set to archive only or to archive and delete. The NearPoint PST Archiving Option automatically locates and archives all PST files according to the administrator-defined policy. It maps all permissions and profiles of each user's PST files without user intervention or involvement. This capability reduces the amount of time required for archiving PST files.

CUSTOMER SPOTLIGHT

“PST files can quickly get out of control. The right way to regain control is to upload PST file contents into an email archive, where they can be protected and easily searched, even remotely—and without adding to Exchange storage. The NearPoint PST Archiving Option now lets users do just that.”

— **Lee Benjamin**
ExchangeGuy Consulting



KEY FEATURES	BENEFITS
Automatic crawl-based collection of PST files on selected servers and desktops	Eliminates the need for administrators to manually collect PST files from servers and desktops for archival
Optionally deletes each PST file from the source machine	Supports a PST file elimination strategy benefiting storage optimization and capacity reduction, and reducing risks from IP leakage
Access to PST data using Self-Service Access for end users and auditors	Allows self-service access to all PST data, making it highly intuitive to access and search archived message data via Outlook; no user training is required
Global search and retrieval across all archive PST information for auditors	Enables users and auditors to search all PST message data quickly in a single pass. Exchange can search only individual PST files one at a time
Intuitive PST folder display	Allows users who rely on folders to see the folder names and hierarchy contained in their PST files preserved identically in the NearPoint archive
Manual PST uploads	Optionally, allows the upload process to be managed by end users, who can plan around their schedule and who know the location of their PST files
Integration with retention and disposition policies	Applies fine-grain retention/disposition policies to PST content, giving finer granularity to enable owners to match specific business and legal needs for PST content
All PST message data is stored 100 percent in NearPoint	Stores all PST message data stored in NearPoint archive; no shortcuts or message stubs are placed in Exchange

SYSTEM REQUIREMENTS

- Microsoft Windows Server 2003
- Mimosa NearPoint for Microsoft Exchange Server

SUPPORTED THIRD-PARTY REPLICATION SOFTWARE

Double-Take® software

Elimination of PST Files

Mimosa NearPoint and the PST Archiving Option together can help you eliminate the use of PST files. The PST Archiving Option is used to archive existing PST files into the NearPoint archive, where all email content is indexed and made available to end users and to auditors for legal discovery. Before you can disable PST files on Exchange Server, you must address the issue of mailbox capacity and mailbox

quotas. The Mimosa NearPoint Mailbox Extension standard feature reduces mailbox capacity and keeps capacity below quota limits by extending attachment files in the NearPoint archive. Using policies and schedules you configure, Mailbox Extension automatically manages mailbox capacity. Users are no longer hindered by mailbox quota limits and no longer require offline PST storage. Now you can disable PST files.

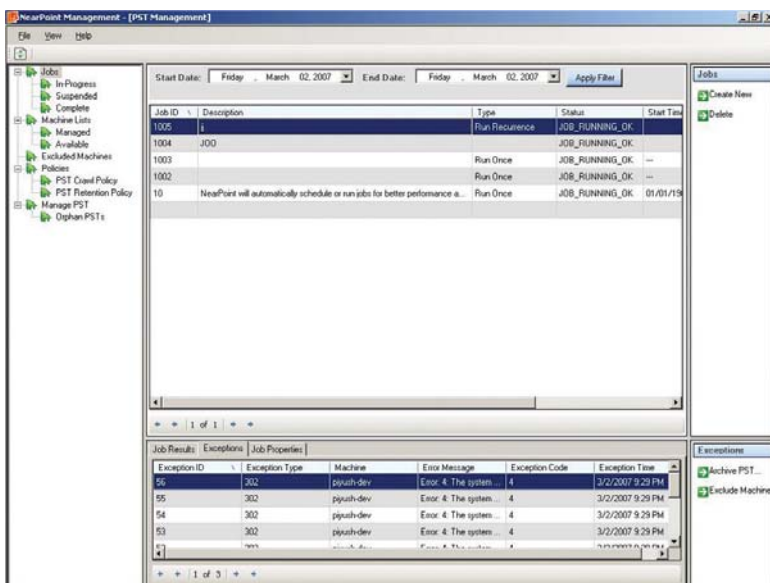


Figure 1. NearPoint PST Management Console

ABOUT MIMOSA SYSTEMS

Mimosa Systems, Inc., delivers next-generation information management solutions with Mimosa NearPoint™, providing a live content archive for Microsoft® Exchange Server. NearPoint unifies archiving, eDiscovery, recovery, and storage management in a single solution, assuring email continuity and regulatory compliance.



Mimosa Systems, Inc.
 3200 Coronado Drive
 Santa Clara, CA 95054
 TEL 408-970-9070
www.MimosaSystems.com